

NETWORK STATEMENT 2026



ANNEX 2D

CLEARANCE AND LOADING GAUGE

TABLE OF CONTENT

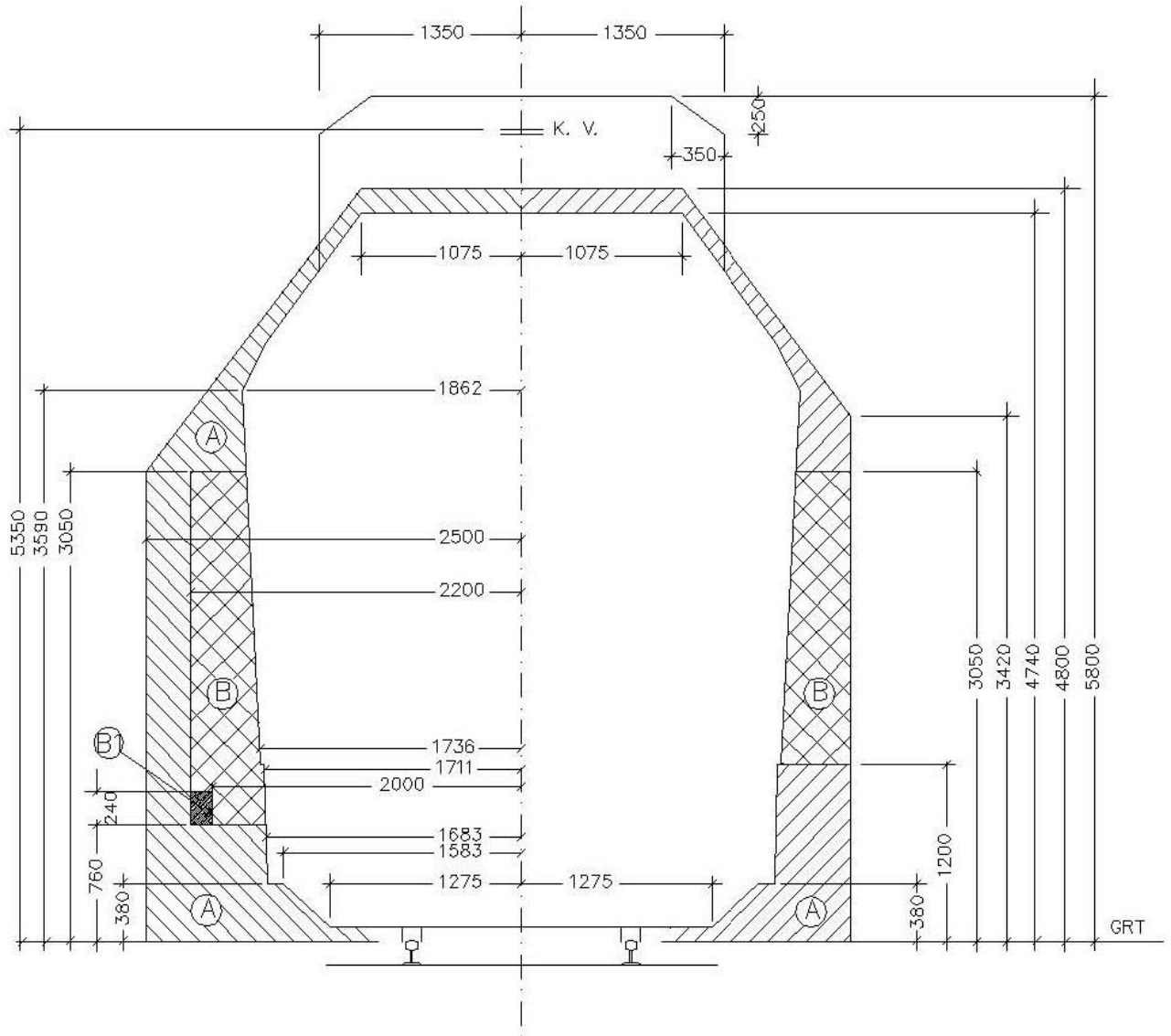
CLEARANCE GAUGE.....	1
NORMAL CLEARANCE GAUGE	1
MINIMAL CLEARANCE GAUGE.....	2
1. CLEARANCE GAUGE FOR NEW CONSTRUCTIONS GC.....	3
LOADING GAUGE	4
2. LOADING GAUGE SŽ I.....	4
3. INTERNATIONAL LOADING GAUGE.....	5
4. LOADING GAUGE FOR COMBINED TZRANSPORT GA, GB, GC	6

CLEARANCE GAUGE

Published in Official Journal of the Republic of Slovenia, No 92/2010, on 19.11.2010.

NORMAL CLEARANCE GAUGE FOR $R \geq 250$ M:

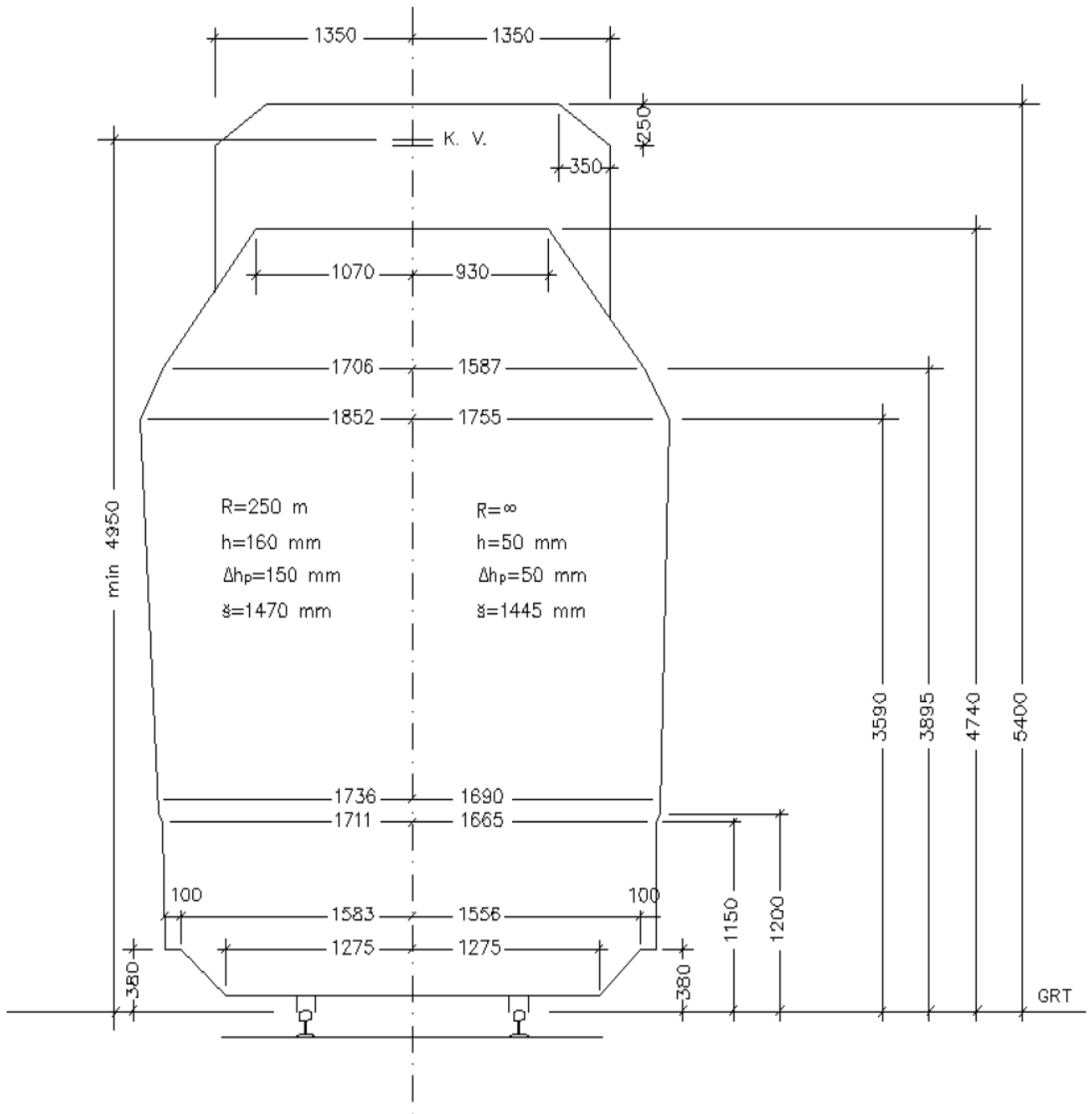
- open rail line,
- main running tracks,
- main tracks for passenger trains,
- other tracks.



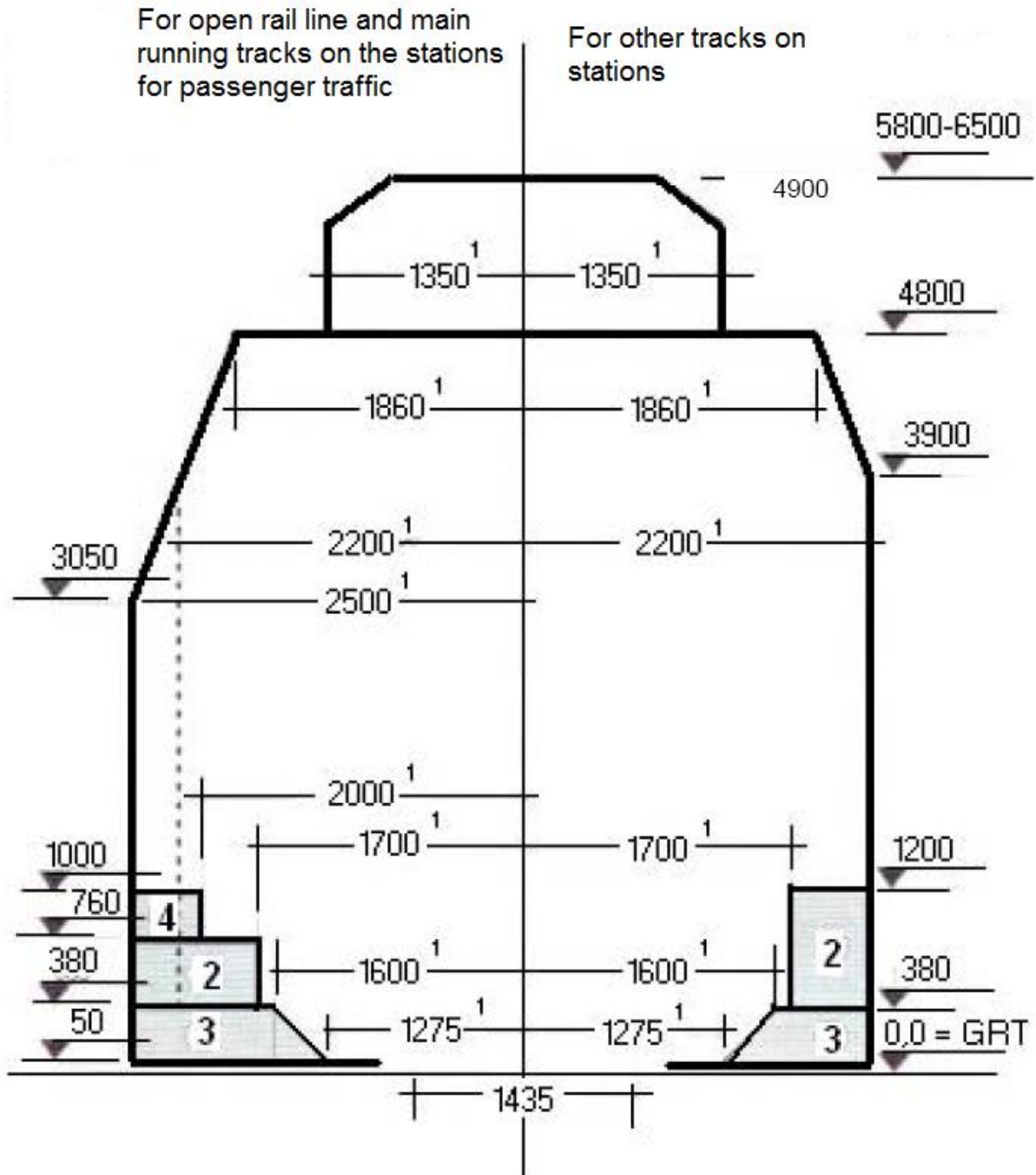
Range A consists of devices, intended for the railway traffic (platforms, loading ramps, shunting equipment, signals, catenary bars). If appropriate safety measures have been implemented, the equipment and materials, used during construction can also be included in this range.

If appropriate safety measures have been implemented, the equipment and materials, used during construction works can be included in the range B.

The signal stiffeners are included in the range B1.

MINIMAL CLEARANCE GAUGE ZA R ≥ 250 m


1. CLEARANCE GAUGE FOR NEW CONSTRUCTIONS GC

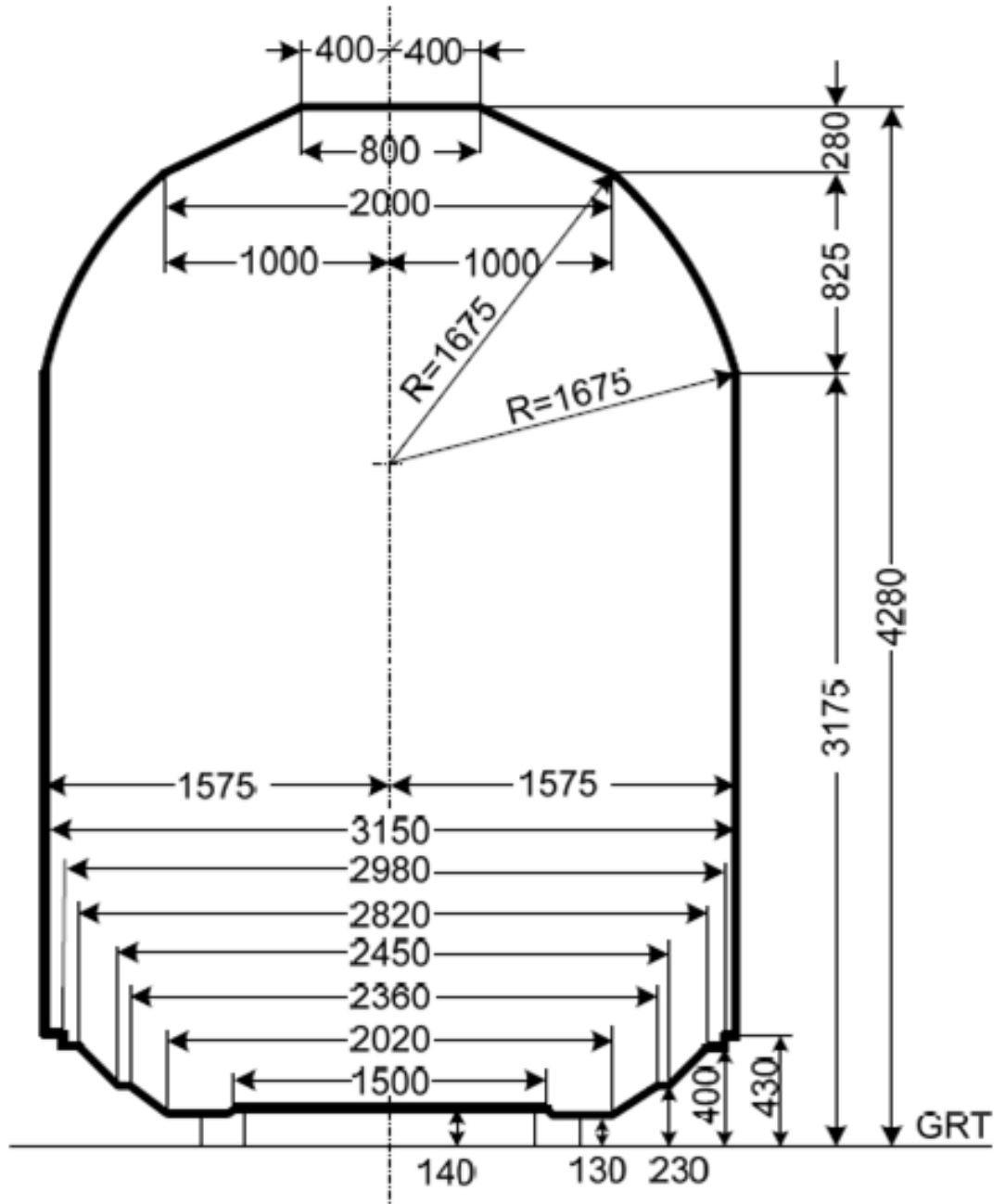


LEGEND:

- (1) For THE RADIUS OF CURVES with $r < 250$ m, the half-widths of the light profiles are increased for the extension according to the following table:

HALF-WIDTHS (m)	INSIDE LIGHT PROFILE (mm)	OUTER SIDE OF THE LIGHT PROFILE (mm)	SPACE FOR NETWORK (mm)
250	0	0	0
225	25	30	10
200	50	65	20
190	65	80	25

3. INTERNATIONAL LOADING GAUGE



4. LOADING GAUGE FOR COMBINED TRANSPORT GA, GB, GC

